



Transmitters
Prepared for the latest digital communication



Liquid & Gas
Highly reliable measurements for all industries



Field
Advanced diagnostics for all your industrial support



Network Solutions
Real-time monitoring for optimal network

Excellence in Process Measurement



Flowmeters
Offer Total Insight throughout the product & plant lifecycle

Your Single-Source Partner for Operational Excellence

Industry leaders striving for operational excellence will benefit from a new approach to plant automation. Yokogawa solutions help you to Measure, Control, and Optimize your processes, ensuring plant-wide integration. A worldwide network of committed experts supports your operations 24/7 for life-cycle optimization.

Optimize



Production Management

Plant Information Management

Advanced Process Control



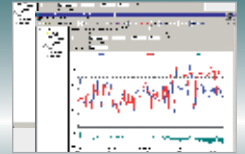
Exaquantum



Exaquantum/Batch



Exasmoc



Exarqe

Control



Production Control and Safety Management

Integrated Production Control & Safety Management

Inherent Failsafe Logic Solver

(SCADA) Supervisory Control and Data Acquisition and Network-based Control



CENTUM VP



ProSafe-RS



ProSafe-SLS



FAST/TOOLS

STARDOM

Measure



Sensing and Actuation

Flow



Pressure



Communication Protocols



HART



FOUNDATION fieldbus



PROFIBUS



BRAIN



ISA100



Modbus

Communications

Fieldmate Device Management Wizard

Communications

Converters & Field Indicators



Technical Partner's Products

Flow Primary Elements

Wireless Gas Detection

Transmitter Manifolds

Remote Seals





Asset Management and Operational Efficiency

Operation Efficiency Improvement

Integrated Asset Management



Exaplog



Exapilot



AAASuite



PRM: Plant Resource Manager

Data Acquisition and Control

Programmable Logic Controller Paper and Paperless Recorders

Data Acquisition Equipment

Controllers



FA-M3R



GX10/GX20



GM10



YS and UT Advanced Series

Liquid and Gas Analyzers

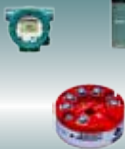
Multivariable

Temperature

Liquid Analyzer

Gas Analyzer

Advanced Analyzer



Analysis and Quality Control

Sampling Systems



Measuring Instruments

Process Calibrators

Process Multimeter



Flow meters



Magnetic Flowmeter ADMAG AXF 4-wire Predictive diagnostics

- Electrode adhesion detection reduced process downtime
- Replaceable electrode construction (option)
- Error messages and diagnostic instructions

User-oriented functionality

- Multi-line, large, backlit and full dot-matrix LCD
- Easy parameter set by infra-red switches
- Easy-to-install rotatable primary (converter)
- HART®, BRAIN, Foundation™ Fieldbus or Profibus

High performance

- Enhanced dual frequency excitation
- 1 µS/cm conductivity minimum
- 0.2 % reading accuracy (optional)
- High-Speed Pulse Output (up to 10,000 pps)

Enhanced Product Lineup

- PFA, Ceramic, Polyurethane liners
- Wide range of electrode materials
- From 2.5 mm to 2600mm
- 3A and sanitary connections are available



Magnetic Flowmeter ADMAG AXR 2-Wire

- Sizes from 25mm to 200mm diameter (1/2" to 8")
- Low power consumption
- Stable measurement under harsh flow conditions by dual frequency excitation
- High accuracy (0.5% of rate)
- Concise indications on full dot-matrix LCD
- Magnet switch operation without opening cover
- HART® or BRAIN
- FMEDA report for SIL2 & SIL3 capability

Magnetic Flowmeter ADMAG RXF 4-Wire

- Sizes from 15mm to 2000mm diameter (1/2" to 80")
- Accuracy 0.5% of Flowrate
- Hard rubber PTFE, LINATEX lines (EPOXY on request)
- Robust, IP67 or IP68 (submersible version)
- Up to PN100
- Potable water approved
- HART®, BRAIN, Foundation™ Fieldbus or Profibus



Vortex Flowmeter digital YEWFL0

- Universal flowmeter for liquids, gas and steam
- Best "in-situ" performance available today; ±0.75% of flowrate
- Superior low flow stability through Spectral Signal Processing
- Highest temperature capability; -196°C to +450°C
- Highest pressure capability available; 2500 lbs (PN420)
- Optional temperature sensor embedded in shedder bar inferring (saturated) steam flow
- HART®, BRAIN or Foundation™ Fieldbus



Multivariable Transmitter DPharp EJX930A/EJX910A

- Multivariable transmitter to measure differential pressure, static pressure, temperature to calculate dynamically compensated mass flow
- 1.0% mass flow rate accuracy
- Dual output capability; analog 4-20 mA and pulse
- PC-based FSA120 EJX-MV Configuration DTM supports the configuration for calculating mass flow
- HART®, BRAIN, Foundation™ Fieldbus, Modbus
- Conformance to ISO 5167
- Integrated temperature sensor for mass flow



Averaging Pitot Tube

- Senses and averages the natural differential pressure created by the velocity profile
- Improved accuracy and turndown, superior signal stability
- Eliminates clogging of sensor ports
- Lower drag force and increased structural strength
- Lower energy costs



Compact Orifice Plate

- Modular and proven concept
- No moving parts, extremely rugged and stable
- Easy to install without impulse piping
- Sizes from 1/2" to 4" (standard), other sizes on request



Essential & Ultimate Transmitter

- 2 specialized transmitters with common platform
- Wizard for easy setup and guidance through the main configuration
- Hart, Foundation Fieldbus, Modbus RTU
- In-line concentration measurement (Ultimate)
- Universal power supply
- Data mobility by microSD card for easy data transfer & remote service
- Event Management NE107 & SIL compliance
- "Tube Health Check" & "Total Health Check" for in-line meter verification
- "Features On Demand" for easy expansion of functions
- Dynamic Pressure compensation
- In-line concentration measurement
- Net Oil Computing acc. API standard

Coriolis Flowmeter Rotamass Prime

- Versatility with lowest cost of ownership
- Max Flow Rate: 76 t/h and Process Connection: Up to 80mm (3")
- Typical sizes: DN15, DN25, DN40, DN50, DN65, DN80
- High flat spec accuracy for wide range of standard applications
- Minimized changeover times by compact and drainable design
- Continuous in-line density and concentration measurement for product quality control



Coriolis Flowmeter Rotamass Supreme

- Superior performance under demanding conditions
- Max Flow Rate: 170 t/h and Process Connection: Up to 150mm (6")
- Typical line sizes: DN15, DN25, DN40, DN50, DN65, DN80, DN100, DN125
- Smart Power Management ensures optimum performance under extreme aeration conditions
- Optimum decoupling of core measuring element from external influences by proven box-in-box design



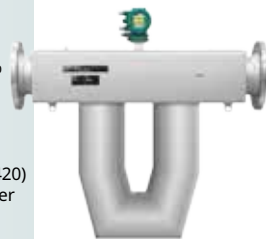
Coriolis Flowmeter Rotamass Nano

- For low flow applications
- Typical line sizes: DN15, DN25, DN40.
- Max Flow Rate: 1.5 t/h and Process Connection: Up to 40mm (1.5")
- Smallest dual bent tube for highly accurate measurement at lowest flows.



Coriolis Flowmeter Rotamass Giga

- Flexible installation for high flow applications
- Typical line sizes: DN100, DN125, DN150, DN200
- Max Flow Rate: 600 t/h and Process Connection: Up to 200mm (8")
- High flat spec accuracy meeting typical oil and gas industry requirements



Coriolis Flowmeter Rotamass Hygienic

- For food & beverage, biotechnology and pharmaceutical utility
- Typical sizes: DN15, DN25, DN40, DN50, DN65, DN80
- Max Flow Rate: 76 t/h and Process Connection: Up to 80mm (3")
- Low flow velocity and low excitation frequency
- Wide range of hygienic process connections



Coriolis Flowmeter Rotamass Intense

- For high pressure applications
- Typical line sizes: 1/2", 1", 2"
- Max Flow Rate: 50 t/h and Process Connection: Up to 50mm (2")
- Pressure Rating: Up to ASME flange class 1500
- Dynamic pressure compensation



Variable Area Flowmeter ROTAMETER™

- Rugged and durable, all 316SS and glass designs
- Low friction, hysteresis free local indication
- Linearised current output with float blocking detection
- Remote configuration using the HART® protocol
- Suitable for use in Zone 1 and 2 hazardous locations
- Digital communication through HART® or Profibus PA
- SIL assessment by FMEDA report
- Available with ASME B31.3 compliance



Rotameter™ is a trademark of Rota Yokogawa GmbH & Co. KG, a subsidiary of Yokogawa Electric Corporation, Japan. Except in the United Kingdom where Rotameter™ is a trademark of Roxboro Group PLC.

Field Communication



FieldMate Versatile Device Management Wizard

- PC-based field device management tool
- Multi-vendor, multi-protocol support - Foundation™ Fieldbus, HART®, PROFIBUS, BRAIN and ISA100.11a
- Automatic device data acquisition upon connection to a device or a segment (Segment Viewer)
- Easy acquisition and diagnosis of device status (Device Viewer)
- Support device database and history information
- Multi-parameter set-up (Parameter Manager)



HART - FieldMate Communicator YHC 5150X

- Intrinsic Safe Handheld which allows the user to download directly from the manufacturer in the original DD's native format, including registered or unregistered devices

BRAIN - Communicator BT200

- Easy to use for setting, changing, displaying, parameters for transmitters with BRAIN communication protocol



Segment Indicator for Foundation™ Fieldbus FVX110

- 2 wire segment powered indicator
- Displays up to 16 process values
- Link master capability & Software download function
- Easy access to target display (back lighted)
- Variety of function blocks supported



MLX Loop Indicator

- "Break Out" up to three analog signals proportional to a HART®
- High/Low process and loop diagnostic alarms
- Sets up as a primary or secondary master, or in "Listen" mode
- Large, 5-digit display
- Isolated output channels

Pressure



Manifold and Direct Mounted Manifold

- 3, 5-Valve manifolds for differential pressure and 2-valve in-line manifolds for gauge pressure
- Low profile for the bottom connection available
- Compact design with fewer potential leak points
- Ease of installation and large number of options
- Direct mounted manifolds are connected and supported at the differential pressure taps
- Hook-up for Enclosure solutions, heat tracing

Pressure & Differential Transmitter DPharp EJX & EJA Series

- Ultra-high performance, 0.04% (opt. 0.025%) accuracy
- 200 to 1 turndown
- Multi-sensing (Differential pressure + Static pressure)
- Fast response 90 ms
- Multi-functional indicator (optional)
- Alarm output for measured and static pressure (opt.)
- Digital communication through HART®, BRAIN, FOUNDATION™ Fieldbus
- SIL2 certified by TÜV IT
- Custody transfer approved
- ISA100 wireless models available



Diaphragm Seals for Differential Pressure and Pressure Transmitter

- Diaphragm seal to combine with EJA and EJX series pressure and differential pressure transmitters
- Intended for corrosive, contaminated, hot or viscous pressure media
- Various process connections, wetted materials and pressure ranges are available



Level Transmitter Digital Remote Sensor (DRS)

- Flange-mounting, compact differential pressure transmitter
- Direct mounting to a tank
- Small flange size model also available
- Two pressure sensors, master (high pressure side) and slave (low pressure side)
- Monitoring or parameter, remotely done via HART communication.

Temperature



Temperature Transmitter YTA610 & YTA710

- A highly accurate temperature transmitter with BRAIN, HART® or Foundation™ Fieldbus communication
- Sensor type is selectable from 12 Thermocouples, 6 RTDs, ohms, or DC millivolts
- Dual compartment housing for harsh environments
- Dual input bumpless change over
- Integral indicator with both a digital readout and percent bargraph
- Choice of the latest digital communication protocols
- Improved self-diagnostics and sensor diagnostic functions
- Local parameter settings
- SIL3 Capable

Wireless Multi-Input Temperature Transmitter YTMX580

- Accept inputs from up to 8 channels
- Perfect for multipoint measurement applications
- High performance measurements with intervals as fast as 1 seconds (3 channels) or 2 seconds (8 channels)

Wireless Temperature Transmitter YTA510

- The high performance temperature transmitter YTA510 accepts Thermocouple, RTD, ohms or DC mill volt inputs

Temperature Transmitter YTA50 & YTA70

- A head mount temperature transmitter with BRAIN, HART® communication
- Dimension conforming to DIN form B standard
- Sensor type is selectable from 12 Thermocouples, 2 RTDs, ohms, or DC millivolts
- Isolated Input/Output signals
- SIL assessment by FMEDA report (YTA70)



Industrial Temperature Assemblies

- Pt100 RTD: 3-, 4-wire, single or dual configuration
- Thermocouple: Type J, K, E, T, 2-(dual), 4-(single) wire with single or dual configuration
- Thermowell style: tapered, straight or stepped
- Complete quality assurance program of NDT's (Diepenetrant inspection, X-ray and Ultrasonic testing)
- Single or duplex sensor configurations available
- YTA series can be installed onto the industrial assembly or within the termination head
- Unique explosive environment approvals allow transmitters installation on-site

Fiber Optic Distributed Temperature Sensing (DTSX)

- Measure up to 50 km distance using fibre optic cable
- Operating Temperature range from -200 C till 800 C
- Top-level Resolution of 0.03 C
- Compact modular Industrial design
- Certified for Zone 2
- Low power system
- Optional 2, 4 & 16 channel optical switch
- Temperature profiles easy integrated in FAST/TOOLS
- Direct I/O capability
- Ethernet and Serial ModBus Communication
- Embedded Alarm Management Tool

Wireless



Field Wireless System

- Pressure Transmitter DPharp EJX B Series
- Field Wireless Gateway
- Field Wireless access point YFGW510
- ISA100.11A Protocol

Control proof

- Quick update time of 1 second
- Redundant star network for control applications
- AES 128 bit security mechanism by NIST approval
- Transmission rate of 250 kbps with wireless frequency bandwidth: 2400 to 2483.5 MHz

Power proof

- Unique battery housing compartment and battery pack design for devices
- Battery pack design exchangeable in hazardous area and replaceable internal cells

Future proof

- IPv6-based wireless protocol for expandability of existing plant network architecture in the future
- Upper communication protocol: Modbus/TCP & OPC

Hastelloy is a trademark of Haynes International Inc. Monel is a trademark of Inco Alloys International Inc. HART® is a trademark of the HART® Foundation. FOUNDATION™ Fieldbus is a trademark of Fieldbus Foundation. PROFIBUS PA is a trademark of PROFIBUS PA.



Field Wireless Multi-Function Module FN510

- Analog input, digital input/output or pulse input are selectable

Field Wireless Multi-Protocol Module FN310

- HART or Modbus communication protocol can be selected
- Various wired legacy device required by plant operation can be converted into a wireless device as required
- Direct support of SENCOM communication for analytical sensors

Field Wireless Communication Module FN110

- Built-in high-performance wireless communication function module has excellent radio sensitivity and low power consumption, provides a stable wireless communication platform with excellent power saving capabilities

Gas Detector GS01

- The hydrocarbon gas detector that operates truly wireless
- Based on innovative MEMS technology the GS01 enables battery-powered gas detection with wireless communication in demanding industrial applications

Liquid Analyzer



pH/ORP/Conductivity/Inductive Conductivity EXA450 series Transmitter

- Unique HMI(Human Machine Interface) with menu structure and high resolution graphical display with touch screen
- Process data trending up to 2 weeks
- Interactive display with choice out of 6 languages
- 4-wire transmitter

pH/ORP Electrodes & Fittings

- FU20 4-in-1 wide body electrode best sensor for most applications
- FU20-FTS differential pH sensor with virtual no maintenance
- SC25 pH sensor with proven high degree of stability
- FU24 with integrated automatic pressure compensation
- PR10 retractable fitting, one model for all parameters

pH/ORP/Conductivity/Inductive Conductivity/ Dissolved Oxygen FLXA21 and FLXA202

- 2-wire Modular Transmitter
- Menu structure & graphical display with touch screen
- Redundant system configuration possible
- One or two sensor modules can be installed
- Digital communication through HART®

Conductivity Sensors & Fittings

- SC4A conductivity sensor for low conductivity and Pharma applications
- SX42 high temperature (up to 250°C) and high pressure (up to 40 bar) conductivity sensor
- SC42 electrode with 2- and 4-electrode design with a wide range of sensors to suit most applications
- Easy mounting, servicing and installation by using a wide range of installation options and materials



PH71 / PH72 / SC72 Pocket Meters

- "One-touch" auto-calibration
- Long term reliability
- Auto power off function
- Water resistant and durable
- Easy cleaning
- Manual or automatic temperature compensation
- Including Redox (PH71)

Inductive Conductivity Sensors & Fittings

- Inductive Conductivity technique
- Elimination of fouling and polarization errors
- Maintenance free construction
- Wide conductivity measuring range

SENCOM SMART pH Sensors

- Reduced maintenance time
- Off-line calibration minimizing process impact
- Easier asset management
- Insensitive for environmental conditions
- Monitoring extreme usage conditions

Dissolved Oxygen Sensors & Fittings

- Visiform Optical SMART DO measurement in a 12mm design
- DO30G sensor, good long term stability and fast response time
- Oxyferm and Oxygold ppm and ppb DO sensors ruggedized design
- PB30 floating ball holder ensures minimum user maintenance

Gas Analyzer



Tunable Diode Laser Spectrometer TDLS8000

- SIL2 TruePeak combined with smart laser technology
- Intuitive touchscreen HMI
- Display on both laser and sensor unit for one-man installation
- HART and Modbus TCP communications standard
- 8-stage auto-gain adapts to difficult applications
- Fully field repairable with 50 days of data and spectra storage
- Area classification Zone2/Div2 or Zone1/Div1

OX400 Low Concentration (ppm) Zirconia Oxygen Analyzer:

- Long life, high reliability Zirconia sensor
- Wide range from 0-10 ppm to 0-100 vol% O₂
- Multi-selector function allowing measurement up to three streams
- Pump or aspirator sampling



In Situ Zirconia Oxygen Analyzer ZR402G / ZR22/ ZR202

- Long-life, high-reliability Zirconia sensor
- LCD touch-screen for ease of operation
- The integrated type integrates both probe and converter, to reduce wiring, piping, and installation costs
- Explosionproof approval
- Remote maintenance using HART® communication

Oxygen Analyzer Averaging Converter AV550G

- Handles input of up to 8 oxygen detectors
- "Hot swap" of channel cards so the analyzer remains on line while maintenance is performed
- Full color touch screen for ease of operation
- Multiple display modes shows average data, single detector or all detector gas concentrations
- Remote maintenance using HART® or FOUNDATION™ Fieldbus communications

Analyzer Solutions



Process Gas Chromatography GC8000

- The GC8000 has a built-in 12-inch colour touchscreen display that simplifies operations. At the touch of the screen, the technician can access all of the analytical parameters and measurement results; displayed in easy-to-understand graphical colour screens.
- GC8000 analytical possibilities are greatly expanded through the multi-oven capability of the analyser. GC8000 is recognized for its reliable and precise performance.
- GC Applications are executed in the Netherlands, Japan, China, USA and Singapore.

Analyzer Bus System

Comprehensive and Centrally located remote maintenance of Analyzers

- Maximal 254 analysers on one network
- Connection to FCS; direct by Modbus TCP/IP, modbus RTU, OPC
- Centralized; analyser operation, view & maintenance
- Storage of Analyser results
- Interface Unit; reduce wiring of Third party analysers



Analyzer Systems

Providing a one-stop solution for: comprehensive services starts from front-end engineering design, project management and in-house execution and full life-cycle support.

- Process sample conditioning Systems
- Analyser houses/cabinets
- Services



Advanced Reflux Sampler

- Self-acting temperature controller, no electric power supply required
- Dual 360° Cooling coils
- Sample outlet over temperature shut-off valve
- High sample flow rate reduce lag-time



Network Data Acquisition & Control Solutions



Paperless Videographic Recorder FX1000

- Up to 12 universal input channels
- 5.7" TFT Colour LCD Display with wide viewing angle
- Network functions: E-mail, FTP, web service
- Dust-proof and water-proof front panel (IP65)
- Power measurement option
- Standard PC software for configuration and historical data viewing



Paperless Videographic Recorder Daqstation DXAdvanced DX1000/DX2000

- Up to 12 or 48 Universal input channels
- Connects to DAQMASTER MW100 via Modbus/TCP for up to 240 external channels
- Standard-equipped with an Ethernet port
- Sends a variety of informative e-mail messages
- Compliant with FDA 21 CFR Part 11: login function/audit trail/electronic signature function (/AS1 option)



SMARTDAC+ GX10/GX20, GP10/GP20

- Multi-touch interface, hand-writing function
- Modular universal I/O, easy to extend, up to 450 channels
- Compliant with FDA 21 CFR part11: login function, audit trail, electronic record/signature function (/AS option)
- Webserver for real-time monitoring and configuration
- Network security functions



SMARTDAC+ Wireless Model GX20W

- Paperless recorder that includes a gateway function for ISA100 field wireless systems
- communication to max 50 wireless devices
- max 100 analogue inputs for wired devices
- max 200 mathematical channels (option)
- advanced network functions (FTP, webserver, SNMP, SMTP)



SMARTDAC+ GM data logger and Control Unit

- Universal inputs, up to 1000 channels
- Supports SD card for local data storage
- Modbus RTU/TCP for easy integration
- Webserver and Bluetooth interface for real-time monitoring and configuration
- Network security functions
- Advanced mathematical functions
- PID and logic Control Junction



Data logging Software GA10

- On-line monitor and record up to 2000 channels and 2000 math channels
- Up to 50 Custom Displays with interactive control elements
- Communication to Yokogawa data acquisition systems and controllers
- Modbus/TCP communication to third party devices
- Remote access for more than 32 client PC's



STARDOM

- Dual-redundant-configurable hybrid PLC / Intelligent RTU
- Reliable hardware & low power consumption controller
- Wide support of field networks e.g TCP/IP, FOUNDATION™ Fieldbus, Hart, ModBus and DNP3
- Efficiency Engineering by IEC61131-3 programming languages and libraries
- Seamless integration with FAST/TOOLS Web based SCADA solutions



IT Machine PLC FA-M3R

- Ultra-fast Processing Speed 100,000 steps of ladder program scanned per 1ms and minimum scan time of 100µs
- Postcard-size Controller
- Compact 147(W) 100(H) 88(D) mm size handles 192 I/O points
- Universal I/O range achievable with one PLC. Controls up to 8,192 points and contain devices of up to 344K words per system



Single-loop Process Controller YS1000

- Uses a full dot matrix color LCD display
- Designed with a lightweight, compact case
- Graphical programming tool for reduction of engineering costs
- Dual CPU and hard manual control as the control output backup function
- Ethernet (Modbus/TCP), Modbus, expansion I/O, and peer-to-peer communication



UTAdvanced Digital Indicating Controllers

- Advanced Control. PID Control — 8 built-in Control Functions / Algorithms. Ladder Sequence Control
- Simplicity. Bright & Easy to read Active Color LCD Display. Multiple language support
- Networking: Ethernet (Modbus / TCP), RS485
- Reliability: IP56
- DIN rail mount version without display available



Compact Signal Conditioner JUXTA VJ

- Compact design for space saving
- Universal input to accept either a thermocouple, RTD or mV signal
- Second isolated current or voltage (pulse) output available
- Modbus (RS-485) communication along with analog output signal from a single unit.
- PC-based parameters setting tool available

Chart Recorders



Chart Recorder Intelligent Industrial Recorders μ R10000/ μ R20000

- 100 mm high reliable recorder with 1, 2, 3, 4-pen and 6-dot models (μ R10000)
- 180 mm high reliable recorder with 1, 2, 3, 4-pen and 6, 12, 18, 24-dot models (μ R20000)
- Large, VFD full dot matrix display
- Displays a variety of screens for site monitoring
- SD Card support for local back up



Chart Recorder SR10000

- Compact and reliable 100mm chart recorder
- Up to 4-pen and 6-dot models
- Configurable inputs
- Large digital display
- Supports Ethernet and RS422/485 comm. interface

Test & Measurement



Process multimeter CA450

- The ideal all-in-one tool for the installation and maintenance of process instrumentation such as transmitters, flow meters, signal conditioners and valve positioners
- 2-wire transmitter simulator (20 mA SINK)
- Loop check – Simultaneously provides 24V transmitter power and precisely measures DC mA signals
- HART mode setting with loop power (250 Ω resistance)
- Step or sweep response test of valve positioners



CA150 - Handheld multifunction process calibrator

- Source: DCV, DCA, Resistance, RTD, TC, Frequency, Pulse
- Measure: DCV, DCA, Resistance, RTD, TC, Frequency, Pulse
- Simultaneous source and measure, Automatic step and sweep
- 24V transmitter loop power supply and current measurement (SINK)
- Internal memory for data and settings



Handheld multifunction calibrators CA51 and CA71

- Source: DCV, DCA, Resistance, RTD, TC, Frequency, Pulse
- Measure: DCV, DCA, ACV, Resistance, Frequency, Pulse (also RTD, TC on CA71)
- Simultaneous source and measure, Automatic step and sweep
- PC communication interface (CA71)



CA300 series – Process calibrators

- CA310 Volt mA calibrator: with loop checking and transmitter simulation (20 mA sink)
- CA320 thermocouple calibrator: simulates 16 types of TC with voltage source and measurement
- CA330 RTD calibrator: with resistance source and measurement

**Yokogawa Electric Corporation
World Headquarters**
9-32, Nakacho 2-chome,
Musashino-shi, Tokyo 180-8750, Japan
Phone : 81-422-52-5555

Branch Sales Offices
Osaka, Nagoya, Hiroshima, Kurashiki,
Fukuoka, Kitakyusyu
www.yokogawa.com

**Yokogawa Corporation of America
Head Office**
12530 W. Airport Blvd.
Sugar Land, TX 77478
United States of America
Phone : 1-281-340-3800
Fax : 1-281-340-3838
www.yokogawa.com/us

Georgia Office
2 Dart Road, Newnan,
Georgia 30265, USA
Phone : 1-800-888-6400/ 1-770-253-7000
Fax : 1-770-254-0928
www.yokogawa.com/us

Yokogawa America DO SUL LTDA.
Praca Acapulco, 31 - Santo Amaro, São Paulo/SP,
BRAZIL, CEP-04675-190
www.yokogawa.com.br

Yokogawa Europe B.V.
Euroweg 2, 3825 HD Amersfoort,
THE NETHERLANDS
Phone : 31-88-4641000 Fax : 31-88-4641111
www.yokogawa.com/eu

Yokogawa Electric CIS LTD.
Grokhol'skiy per 13 Building 2, 4th Floor 129090,
Moscow, RUSSIA
Phone : 7-495-737-7868
Fax : 7-495-737-7869
www.yokogawa.com/ru

Yokogawa China CO., LTD.
3F Tower D Cartelo Crocodile Building, No.568
West Tianshan Road,
Shanghai 200335, CHINA
Phone : 86-21-62396262
Fax : 86-21-62387866
www.yokogawa.com/cn

Yokogawa Electric Korea CO., LTD.
(Yokogawa B/D, Yangpyeong-dong 4-Ga), 21,
Seonyu-ro 45-gil, Yeongdeungpo-gu,
Seoul, 150-866, KOREA
Phone : 82-2-2628-6000
Fax : 82-2-2628-6400
www.yokogawa.com/kr

Yokogawa Engineering Asia PTE. Ltd.
5 Bedok South Road,
Singapore 469270, Singapore
Phone : 65-6241-9933 Fax : 65-6241-2606
www.yokogawa.com/sg

Yokogawa India LTD.
Plot No.96, Electronic City Complex,
Hosur Road, Bangalore - 560 100, INDIA
Phone : 91-80-4158-6000
Fax : 91-80-2852-1442
www.yokogawa.com/in

Yokogawa Australia PTY. LTD.
Tower A, 112-118 Talavera Road,
Macquarie Park NSW 2113, AUSTRALIA
Phone : 61-2-8870-1100
Fax : 61-2-8870-1111
www.yokogawa.com/au/

Yokogawa Middle East & Africa B.S.C.(c)
P.O. Box 10070, Manama, Building 577,
Road 2516, Busaiten 225, Muharraq, Bahrain
Kingdom of BAHRAIN
Phone : 973-17358100 Fax : 973-17336100
www.yokogawa.com/bh

